



## SHOWCASE® Image Center - Setting up a Hamachi VPN

You need to have a Virtual Private Network (VPN) provide security for transferring images from your ShowCase Image Center to remote ShowCase Premier viewers. If your office does not currently have a VPN, one fairly easy to deploy solution is *Hamachi* virtual VPN software sold by the company *LogMeIn*. (Trillium Technology has no connection to *LogMeIn*. We provide this guide for the convenience of offices looking for a security solution)

**NOTE** that the Hamachi VPN works for PCs running ShowCase Premier. It does not work for iPad connections. If you are using ShowCase Viewer for iPad, you will need to install a VPN appropriate for iPad connections.

As of this writing, Hamachi comes in three versions: Standard, Premium and Multi-Network. The Standard version allows Hamachi to run as an always-on service with up to 32 connected computers. At the time of this writing, Standard costs \$49/year and meets the needs of most clinics.

These instructions are for setting up the Hamachi VPN Standard service on a ShowCase Image Center computer and for configuring remote ShowCase Premier software to connect to the Image Center using this VPN. The instructions should help you thru the set-up process although LogMeIn might change their web site.

### Overview for setting up Hamachi as your VPN solution (detailed instructions follow)

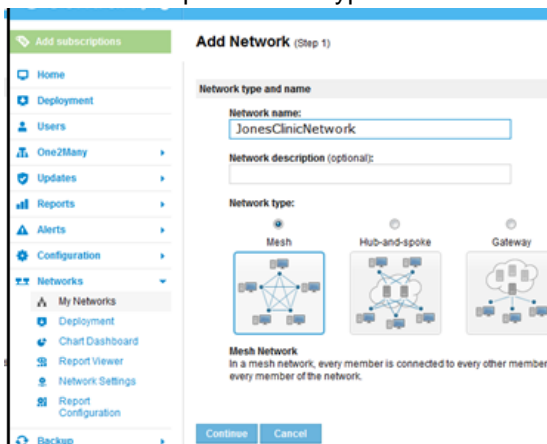
1. Create a Hamachi network
2. Install the Hamachi client on the ShowCase Image Center computer.
3. Install the Hamachi client on the remote ShowCase computer(s).
4. Configure your remote ShowCase Premier software to connect to the Image Center using the VPN.

### Step 1- Create a Hamachi network

1. Go to the Hamachi web page <https://secure.logmein.com/products/hamachi/>
2. Sign up for a LogMeIn account by entering an email address and password. Please ignore Get LogMeIn "Add Computer". That is not needed for the Hamachi product.
3. Go back to the Hamachi web page <https://secure.logmein.com/products/hamachi/>
4. Click the **Try It Free** button.
5. Click the **Add Network** button.



6. Add a network. Give it a meaningful name, like JonesClinicNetwork.
7. There are multiple network types. Chose a **Mesh** network.



8. Click Continue.
9. Set Join Requests to “Accept automatically”.

### Add Network (Step 2)

**Join Requests**

- Accept automatically
- Must be approved
- Members can be added on the web only

10. Give the network a password.

#### Network password

A password is required to join this network

Network password

Confirm password

11. Choose your preferred Subscription (most often Standard) and then click **Continue**.
12. Click **Finish**:
13. Write down the Network ID and password, you will need them later for connecting ShowCase Premier to the network. The network ID is a series of numbers, like “214-656-907”

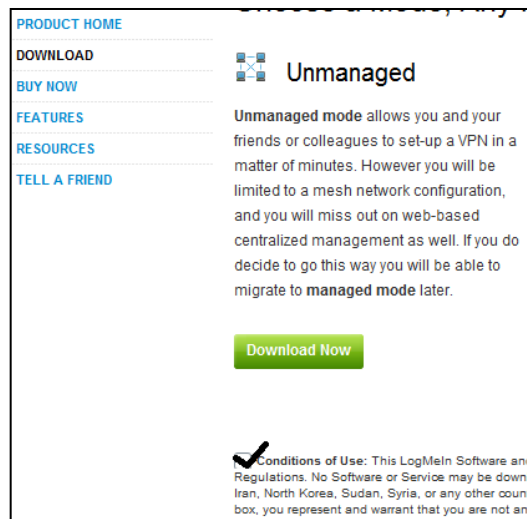
The screenshot shows the 'Edit Network' page in the LogMeIn Central interface. On the left is a navigation menu with options like Home, Deployment, Users, One2Many, Updates, and Reports. The main content area shows the network name 'JonesClinicNetwork' and tabs for Members, Join Requests, Settings, Password, and Subscriptions. Below these tabs is a table with columns for ID, Name, and Type. The first row in the table has the ID '214-656-907', the name 'JonesClinicNetwork', and the type 'Mesh'. A red box highlights the ID, and a red arrow points to it from a text box that says 'Write down the ID'.

ID	Name	Type
214-656-907	JonesClinicNetwork	Mesh

*Use the ID when joining this network from the Hamachi client.*

## Step 2 - Install the Hamachi client on the Image Center computer

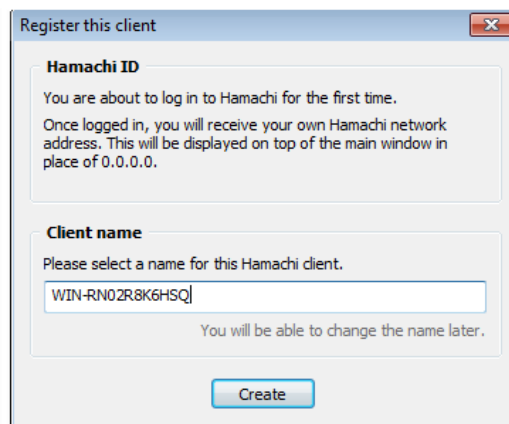
1. Download the Hamachi.msi install file from the LogMeIn web page currently found using this link: <https://secure.logmein.com/products/hamachi/download.aspx>
2. Read and check the **Conditions of Use** checkbox and click the Unmanaged **Download Now** button.



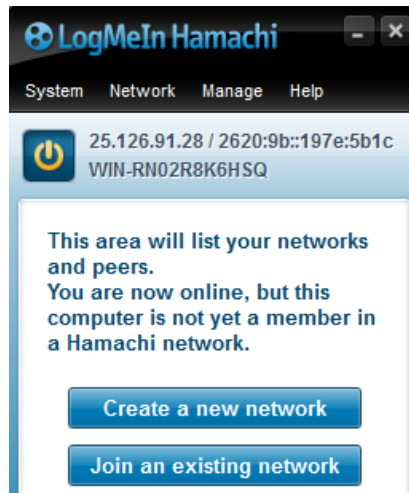
3. Run the Hamachi installer you have downloaded on your Image Center computer.
4. Click the **Power on** button.



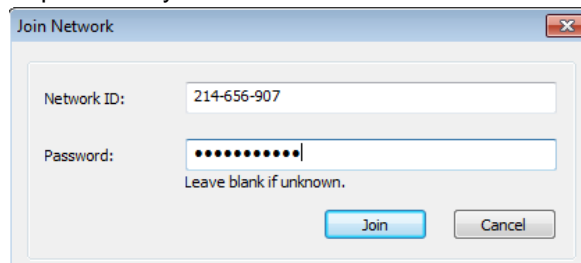
5. You will be asked for a client name for the computer. Use the default name provided. Then click **Create**.



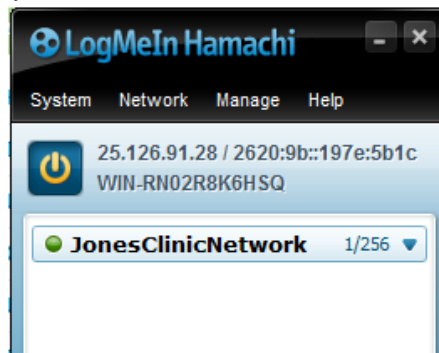
6. You are then asked whether to create a new network or join an existing network. Click **Join an existing network**.



7. Now enter the Network ID and password you wrote down earlier.



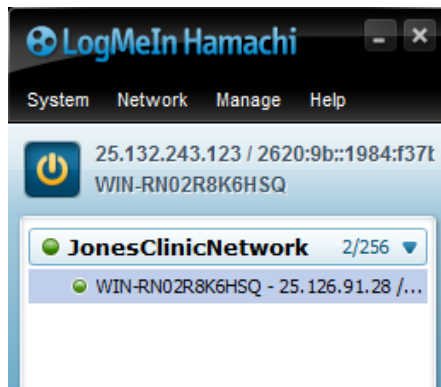
8. Once you have joined the network your Hamachi window should look like this:



9. Write down the IP address shown at the top of the light blue area. This is the IP address you will need to configure your remote ShowCase computer(s). In the example above 25.126.91.28 is the IP address that is needed to configure remote clients.

### Step 3 - Install the Hamachi client on the remote computer(s)

Follow the Step 2 instructions you used to install the Hamachi client on the Image Center computer. When completed, your remote computer's Hamachi window should look like this:



The name of the Image Center computer (and its IP address) should be in the list of remote computers.

#### Step 4 - Configure your remote ShowCase Premier software to connect to your Image Center using the Hamachi VPN

If you have not done so, follow the instructions in the ShowCase Premier Remote Access Configuration Guide to set up remote access.

When entering your image center communication information, use the Hamachi IP address that you wrote down earlier-- in this example 25.126.91.28.

Image Center Communication	
Name	Jones Clinic Image Center
Address	25.126.91.28
Port	8080
User Name	DrJones
Password	*****

Repeat step 4 for all remote PCs that need to access studies from your ShowCase Image Center. Your clinical images will be transferred securely to the remote computers.

Once you have configured all of your remote computers you are ready to use ShowCase to securely transfer or studies from your Image Center to remote locations.

**SHOWCASE® is a registered trademark of Trillium Technology, Inc.**